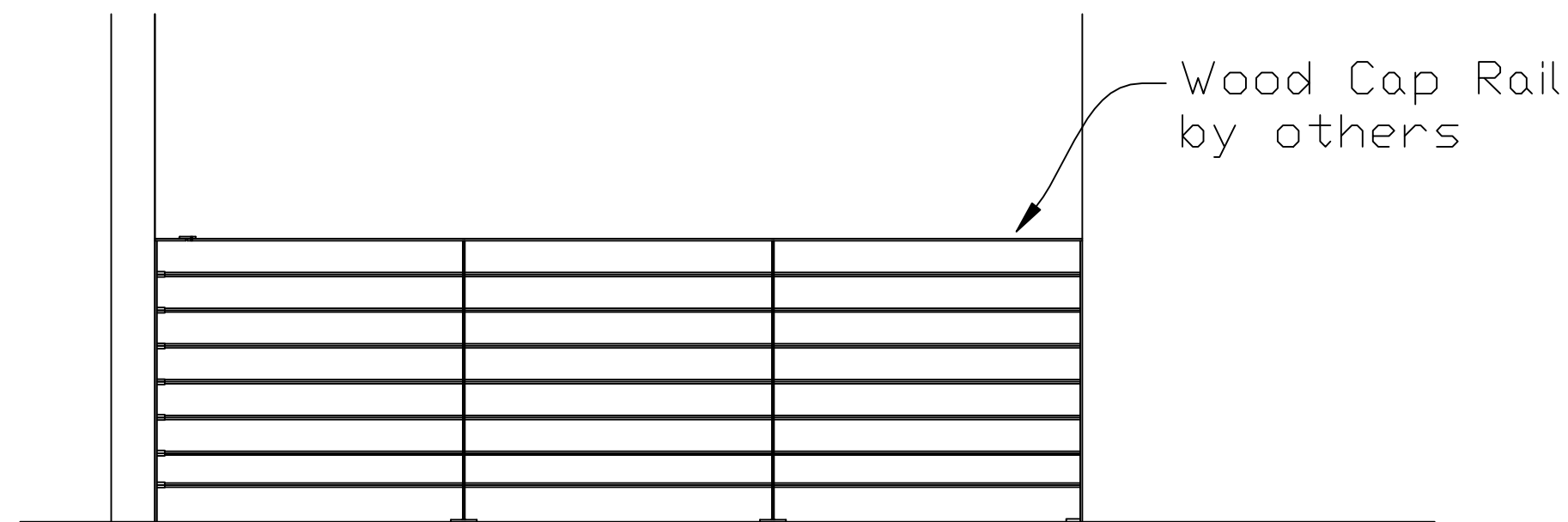


SAUGATUCK ROD RAIL SYSTEMS



Rail B

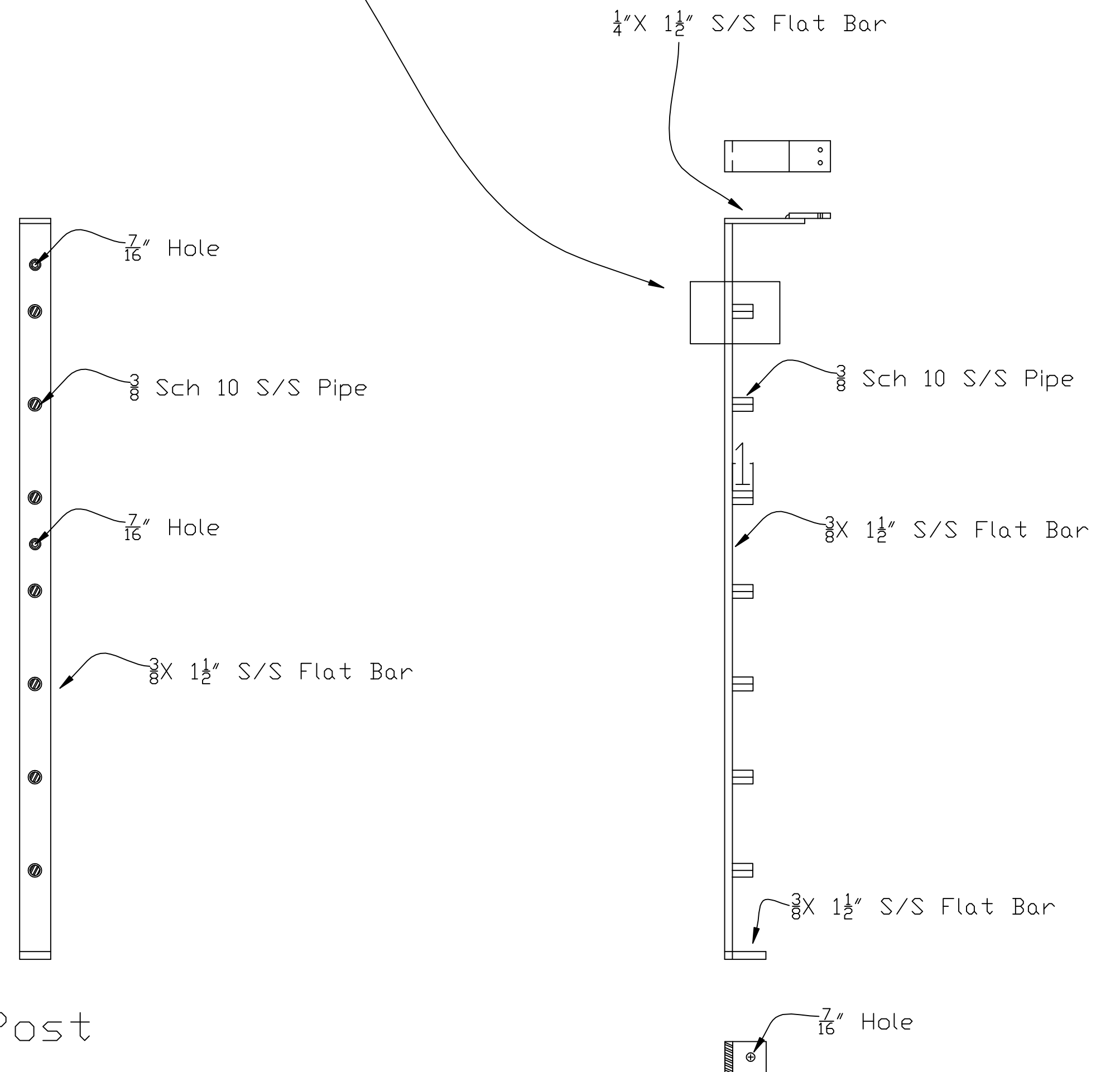
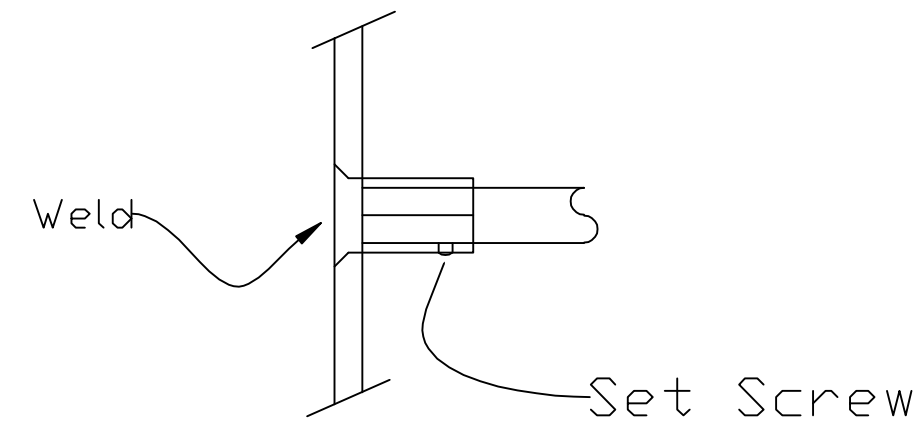
Saugatuck rail System

Saugatuck Rails

Instead of cable rails. The rods have the same effect without adjusting cables.

Specifications:

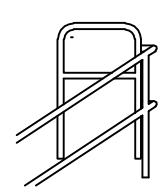
1. All material to be $\frac{3}{8}$ "x $1\frac{1}{2}$ " Stainless Steel Flat Bar
2. Finish to be no. 4 finish
3. Intermediate to be $\frac{1}{2}$ " rod as above.
4. All hardware to be stainless steel.



Post

Splice Post

REV.	DESCRIPTION	DATE	BY	FOR APPROVAL:	JOB NAME:	DRAWN BY:	CHECKED BY:
				R & R APPROVAL:	LOCATION:	SCALE: None	
				TO SHOP:	CONTRACTOR:	DATE:	
				TO FIELD:	DESCRIPTION: Saugatuck Rail Systems	JOB NUMBER	SHEET
				AS BUILT:			M2 \triangle



MET TECH INC

1901 Post Road
Fairfield, CT. 06824

PH-(203)-254-9319
FAX-(203)-254-9328