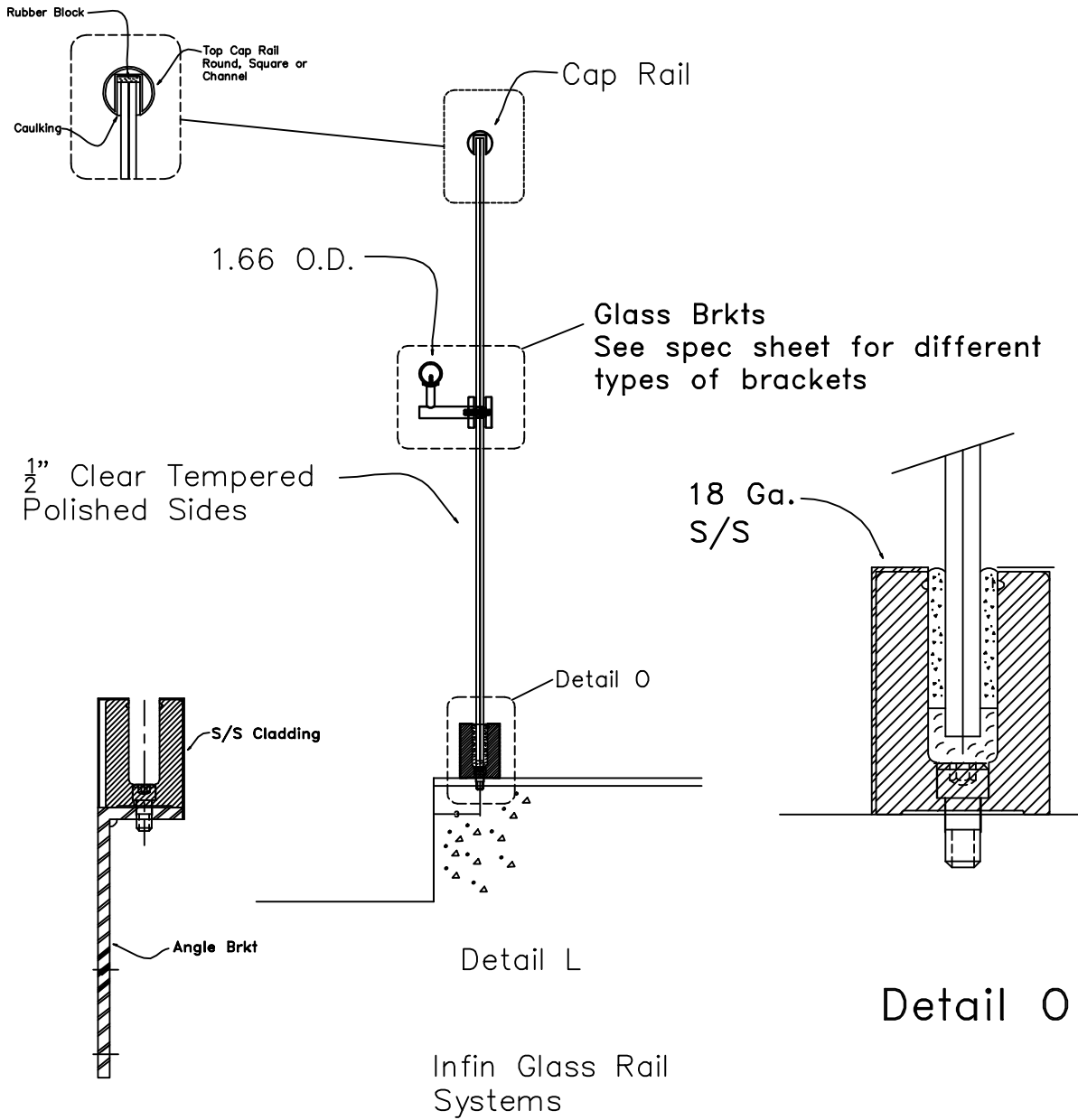


# SHOE GLASS RAIL SYSTEMS



Cross Section Side Mounted Glass Detail

Infin Glass Rail Systems

**MET TECH INC**  
 1901 Post Rd., Fairfield, CT. 06824  
 JOB NAME: \_\_\_\_\_ Ph: (203) 254-9319  
 LOCATION: \_\_\_\_\_ Fax: (203) 254-9328  
 CONTRACTOR: \_\_\_\_\_

DRAWN BY:		DRAWING DATE:	
SCALE:		FOR APPROVAL: ??/??/??	
FINISH:		IN PRODUCTION: ??/??/??	
HOLES:		JOB NUMBER:	
WORK ORDER #:			DRAWING NUMBER:
DESCRIPTION: Infin Glass Rail System			G3 △